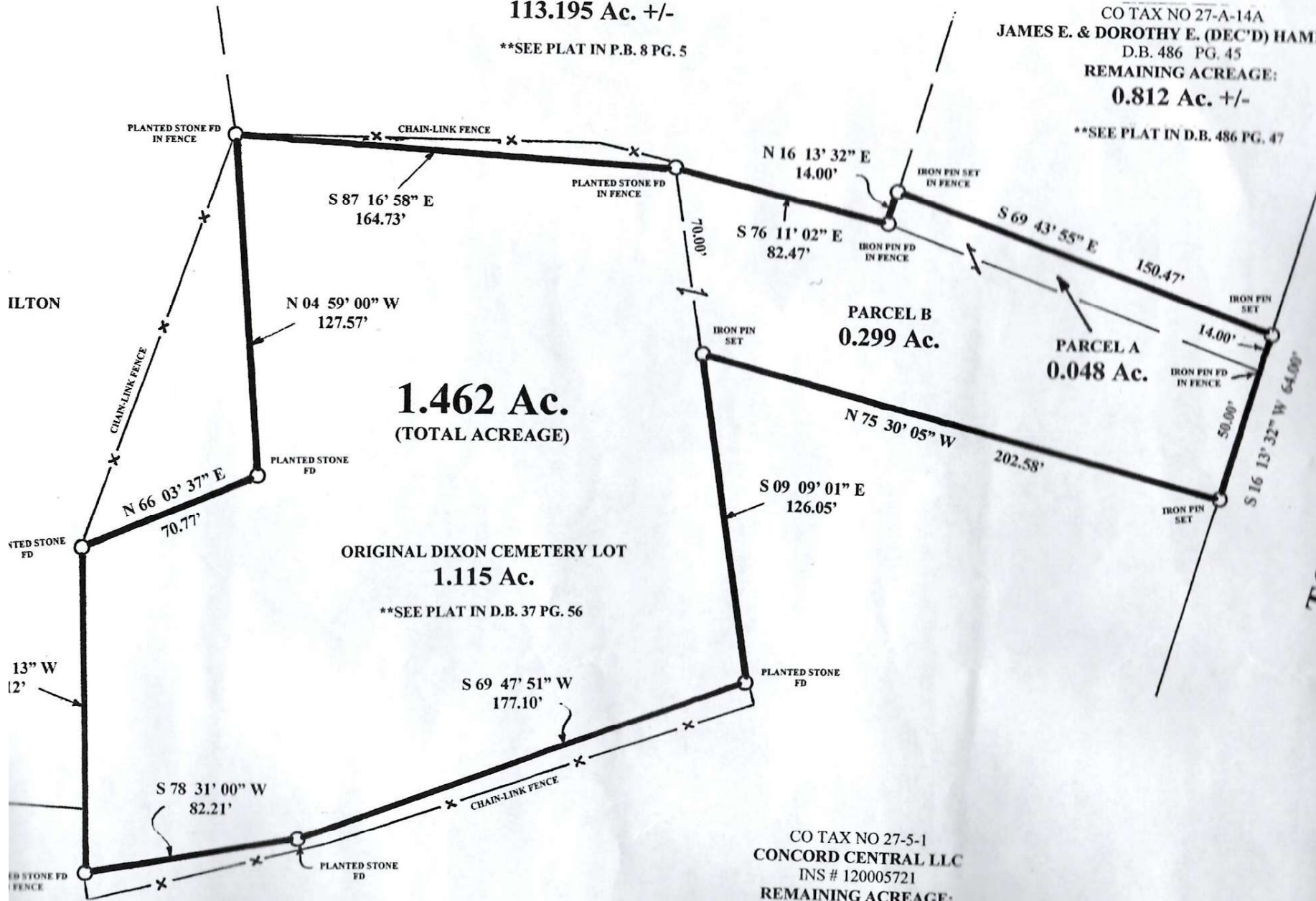


CO TAX NO 27-A-14
CONCORD CENTRAL LLC
 INS # 120005721
 REMAINING ACREAGE:
113.195 Ac. +/-

**SEE PLAT IN P.B. 8 PG. 5

CO TAX NO 27-A-14A
JAMES E. & DOROTHY E. (DEC'D) HAMILTON
 D.B. 486 PG. 45
 REMAINING ACREAGE:
0.812 Ac. +/-

**SEE PLAT IN D.B. 486 PG. 47



1.462 Ac.
 (TOTAL ACREAGE)

ORIGINAL DIXON CEMETERY LOT
1.115 Ac.

**SEE PLAT IN D.B. 37 PG. 56

PARCEL B
0.299 Ac.

PARCEL A
0.048 Ac.

CO TAX NO 27-5-1
CONCORD CENTRAL LLC
 INS # 120005721
 REMAINING ACREAGE:
200.551 Ac. +/-

**SEE PLAT IN P.B. 11 PG. 165

TOLL GATE ROAD
 (STATE ROUTE 653-50' R/W)

Aust
 AGENT FOR

APPRO
 IN ACCORDANCE
 OF THE
 PLAT